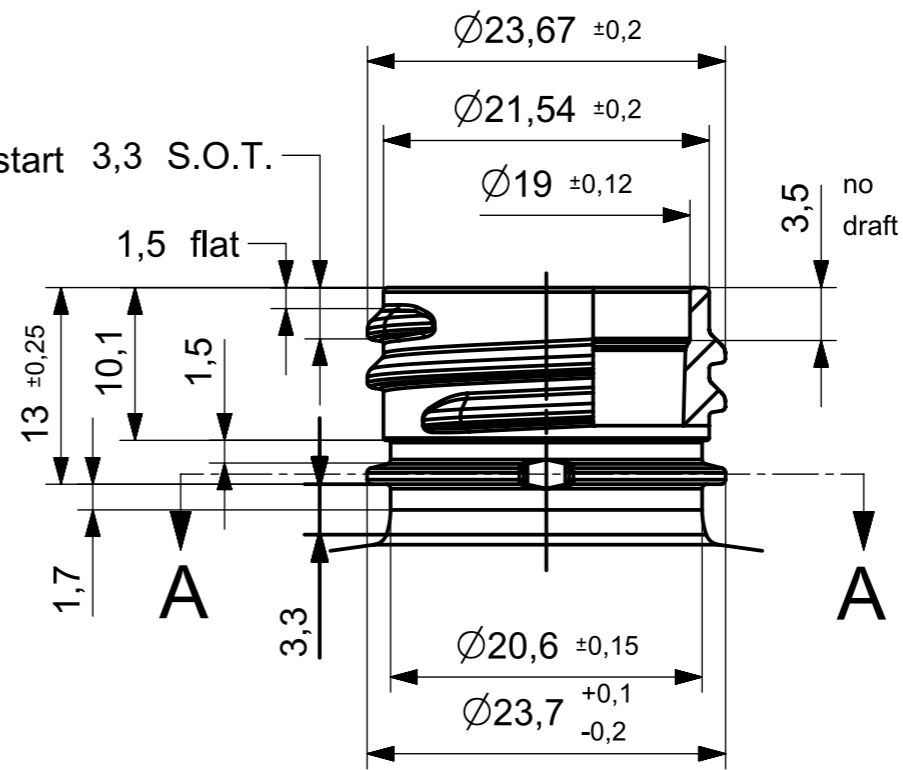
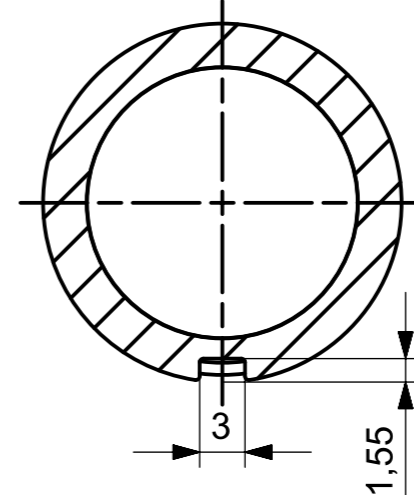


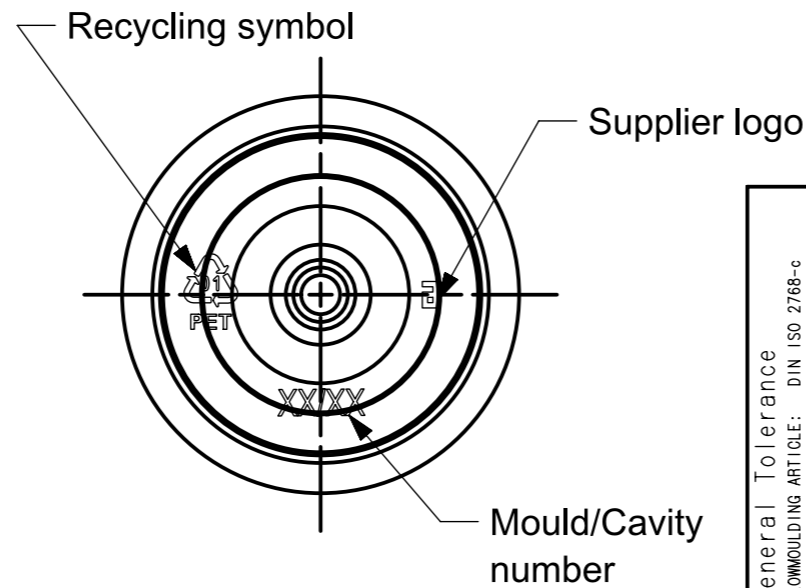
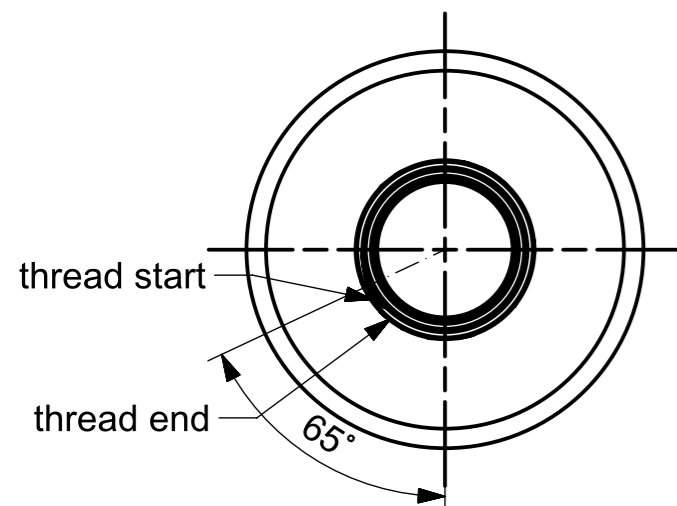
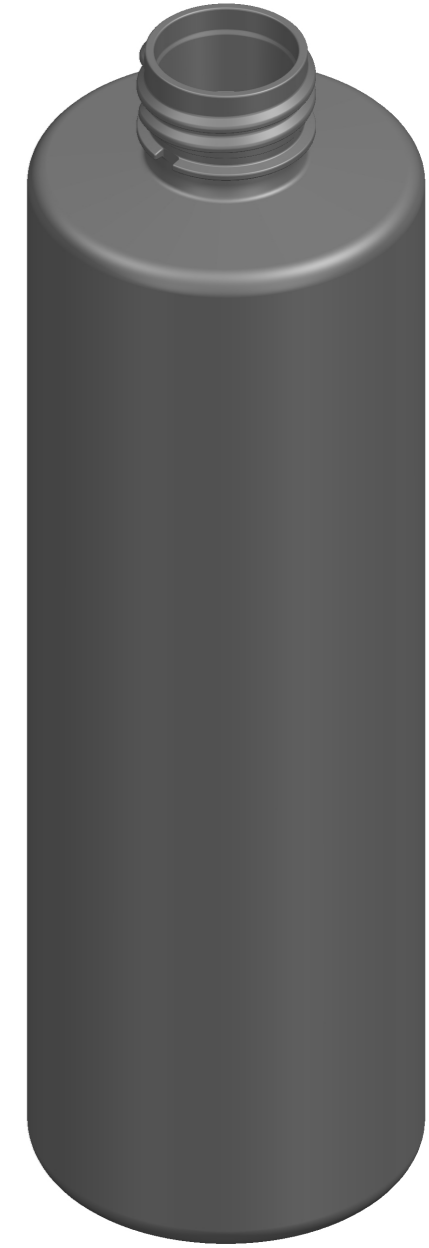
Neck Detail:
 Scale: 2:1
 Pitch: 3,175mm
 Turns: 1,9 (684°) without start 3,3 S.O.T. and end of thread
 Starts: 1 start of thread




Section A-A



Material: PET
 Weight: 23g ± 1g
 Volume: 300ml fill level
 330ml ± 10ml brimful
 Surface area: 30318mm²
 1a) Mould no.: 8262



General Tolerance BLOWMOLDING ARTICLE: DIN ISO 2768-c INJECTION ARTICLE: DIN 16901/150B PREFORM: DIN 16901/130A	1a	mould number added	Fl	20.05.22	2a	was 5mm	Fl	25.05.22
	Index	Modification	Name	Date	Index	Modification	Name	Date
	Scale:		Name	Date				
	1:1		Prepared: Iwan	13.05.2022				
		Reviewed: Oekmen	13.05.2022	Art.No.: Page: 1 of 1				
ALPLA reserves all rights to the technical IP contained in the document		Superseded:						Drawing No.: Revision: 02
Title:		Superseded by:		A001_1_9401_722_08842_Rev2_Z01				
Cylindrical 300ml PET article drawing		Weight:						